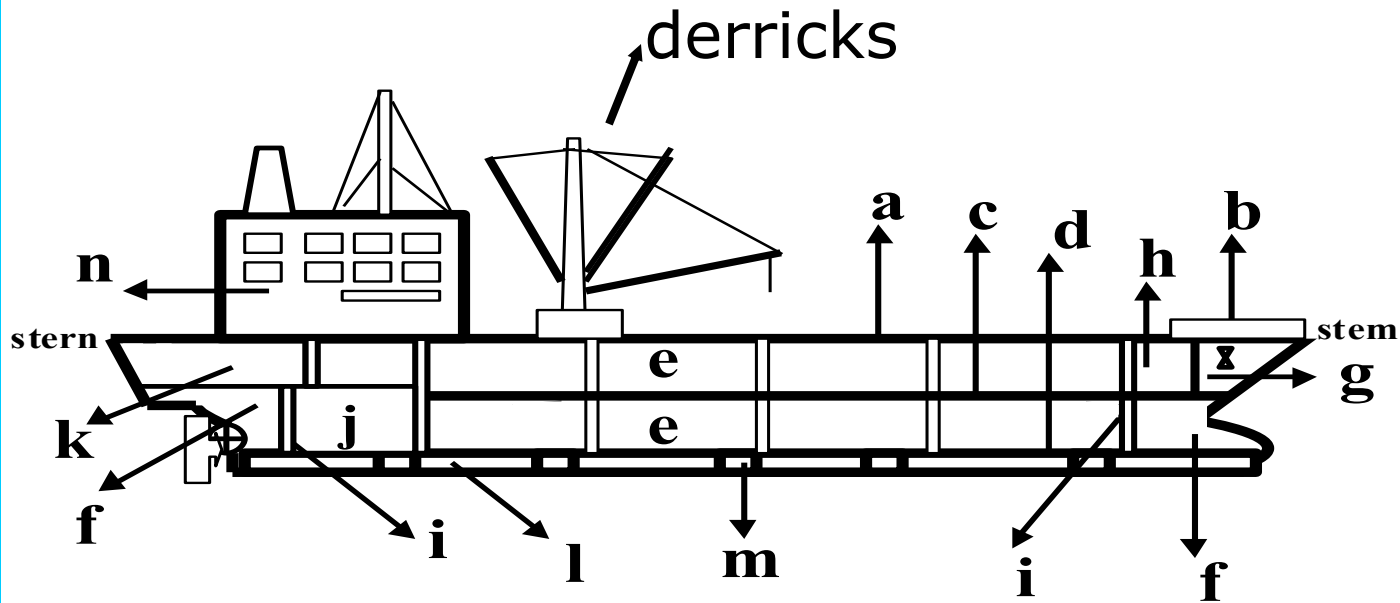


General arrangement

An aerial, black and white photograph of a large ship's hull under construction in a dry dock. The hull is the central focus, showing its curved structure and various internal compartments. The dock is filled with construction equipment, including cranes, scaffolding, and various materials. In the background, a building with the word "NASSCO" is visible. The overall scene depicts a busy industrial environment.

Separations and spaces

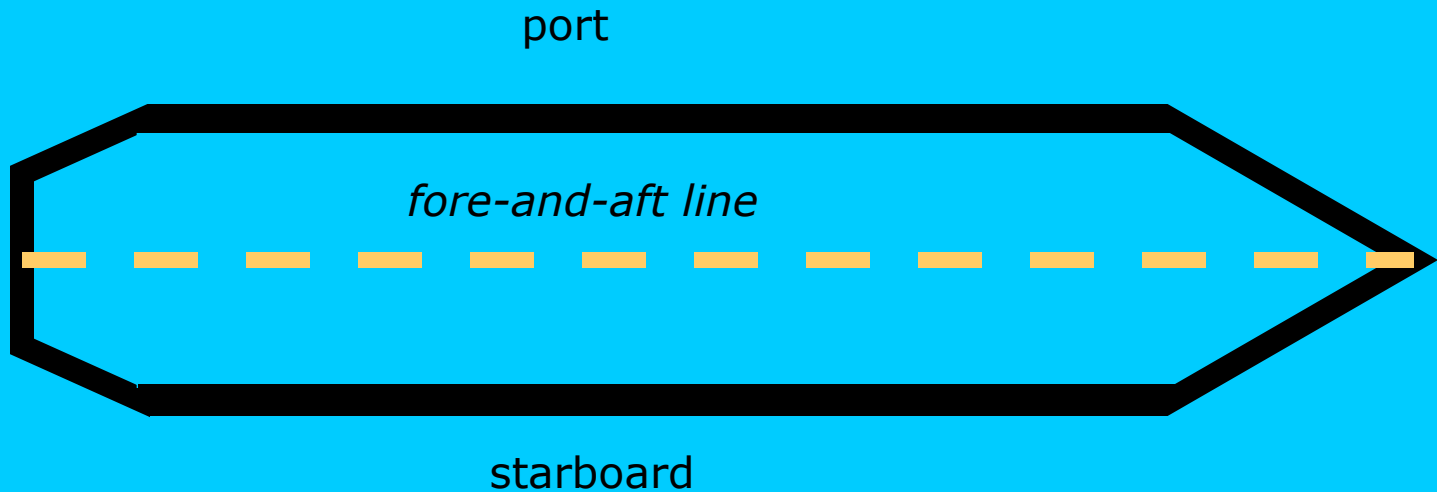


n = superstructure

Separations and spaces

THE FORE-AND-AFT LINE

The fore and aft line *separates* starboard from port.





Portside

Starboardside

Fore -and -aft line

STEM AND STERN

The extreme fore end of the vessel is called *stem*; the extreme aft end of the vessel is called *stern*.





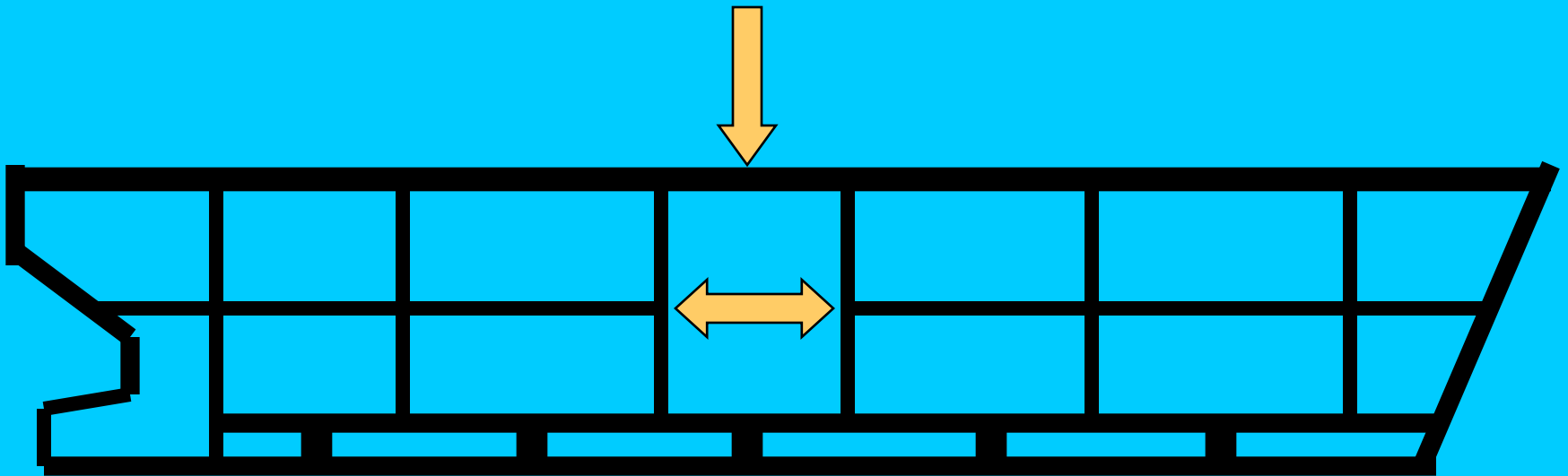
The superstructure

Stern

Stem

DECKS AND BULKHEADS

Decks and bulkheads are horizontal and vertical *separations* that form the *holds and spaces*.



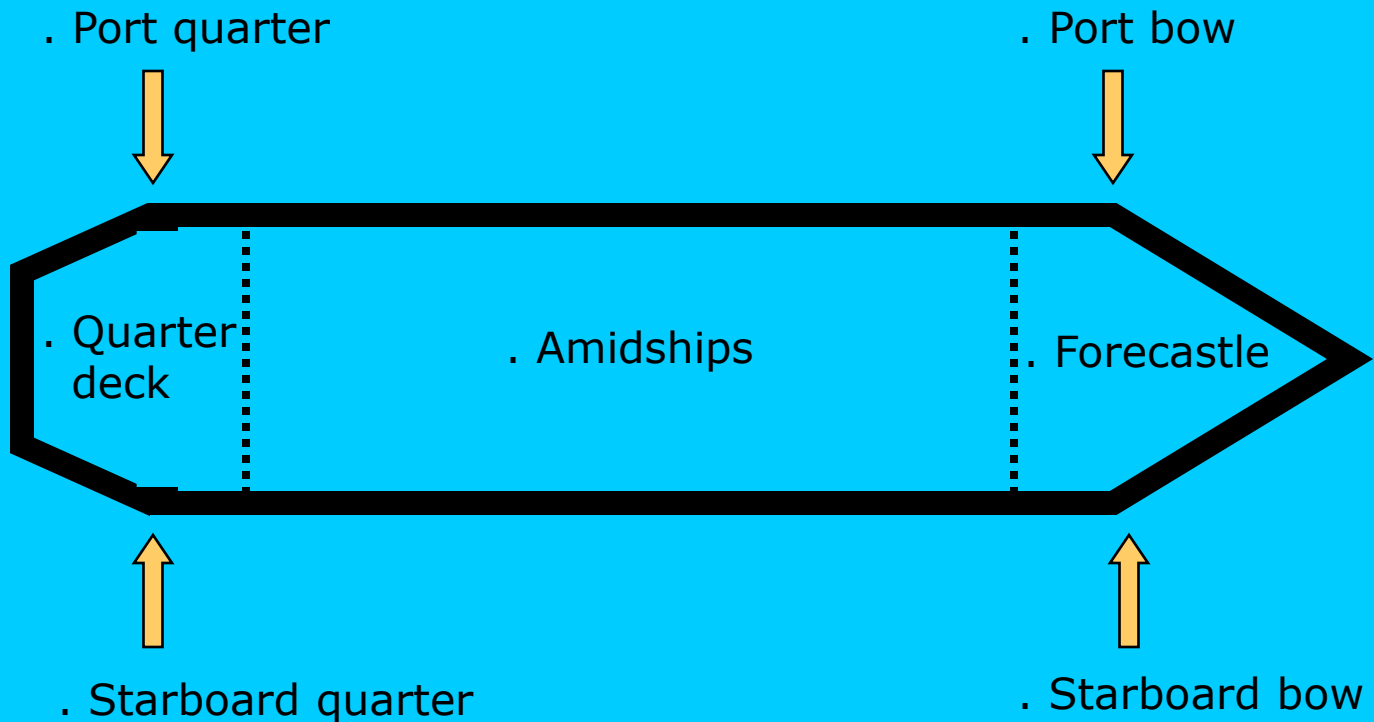


Upper hold with tweendeck

Upper deck
("weather deck")



THE UPPER DECK, BOWS and QUARTERS



The forecastle



BOWS AND QUARTERS

SB. QUARTER

P. QUARTER

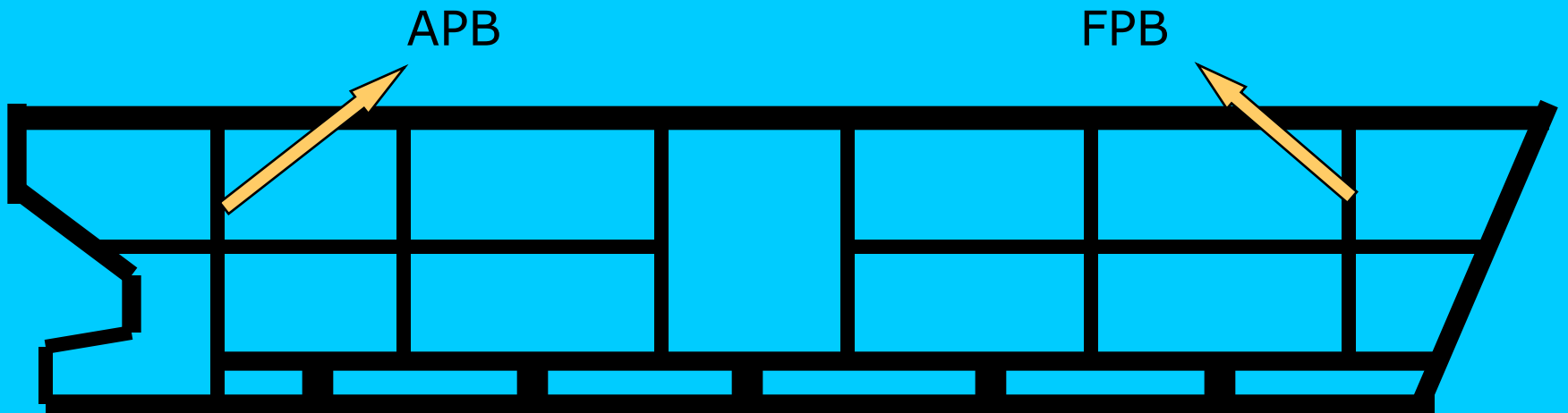
SB. BOW

P.BOW



BULKHEADS

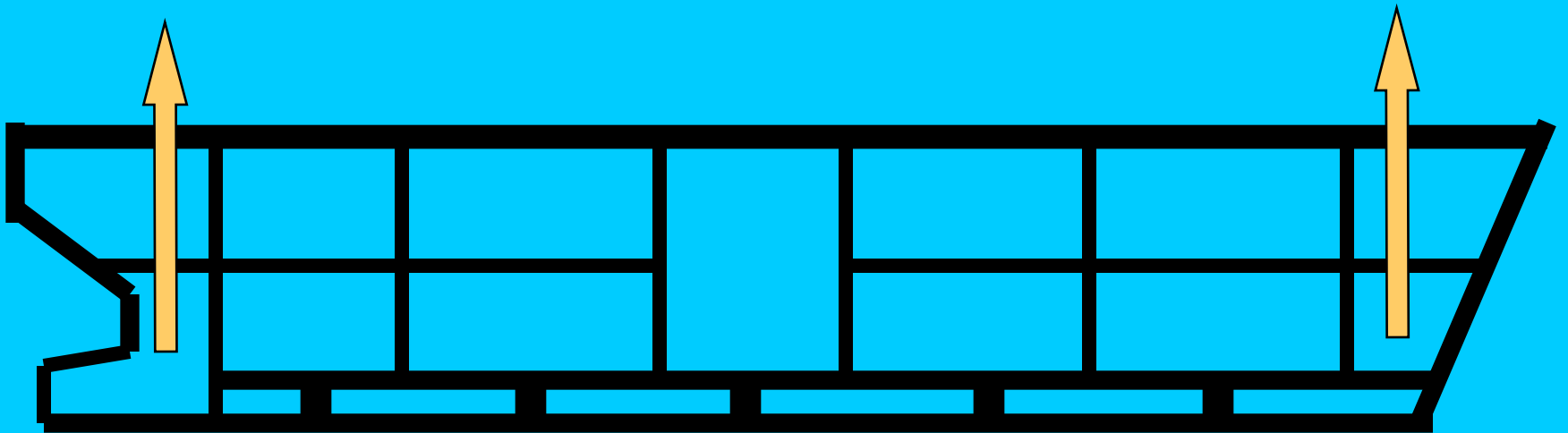
The *forepeak bulkhead* and the *afterpeak bulkhead* are watertight *collision* bulkheads.



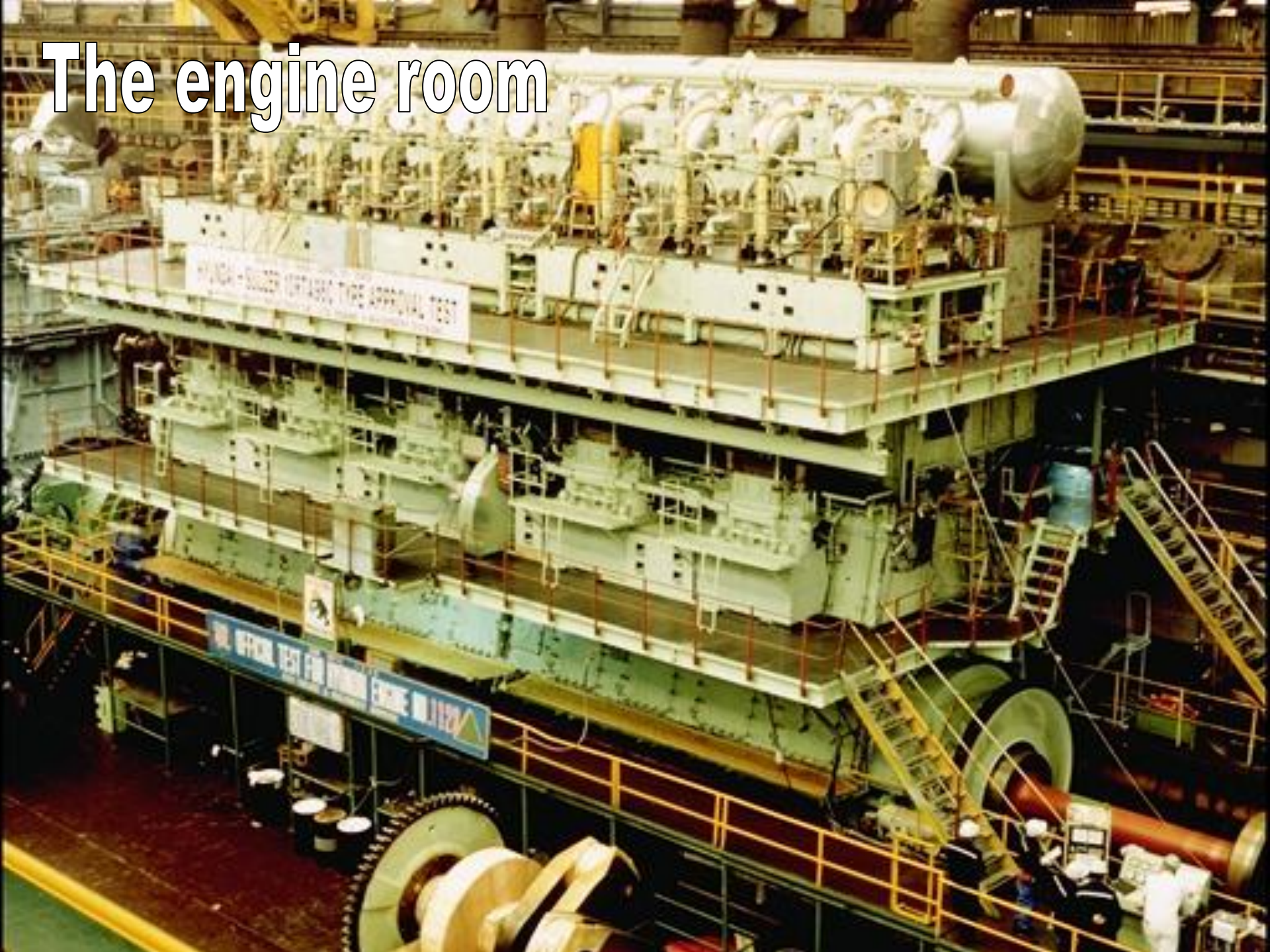
THE PEAK TANKS

Afterpeak.

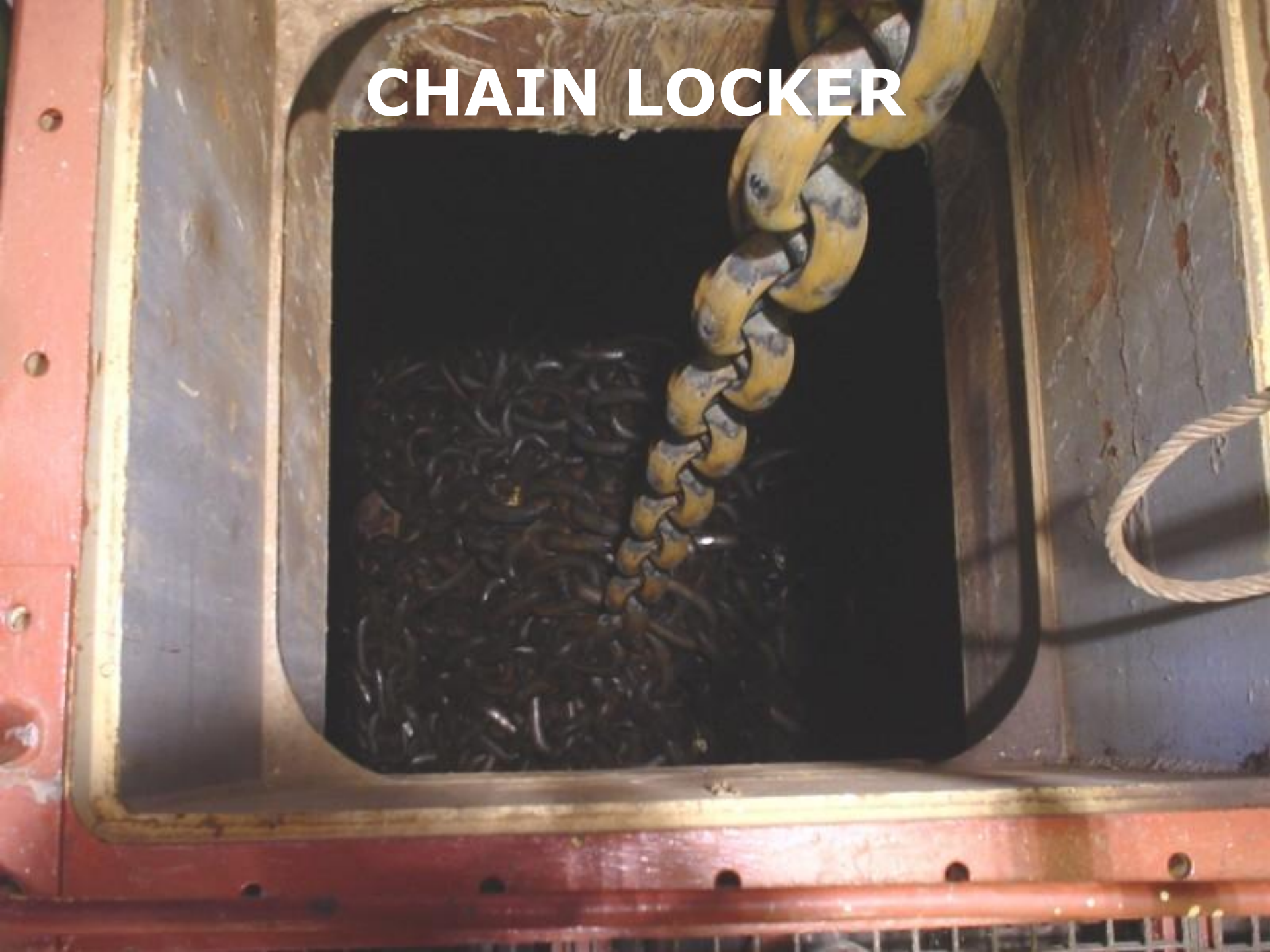
Forepeak.



The engine room

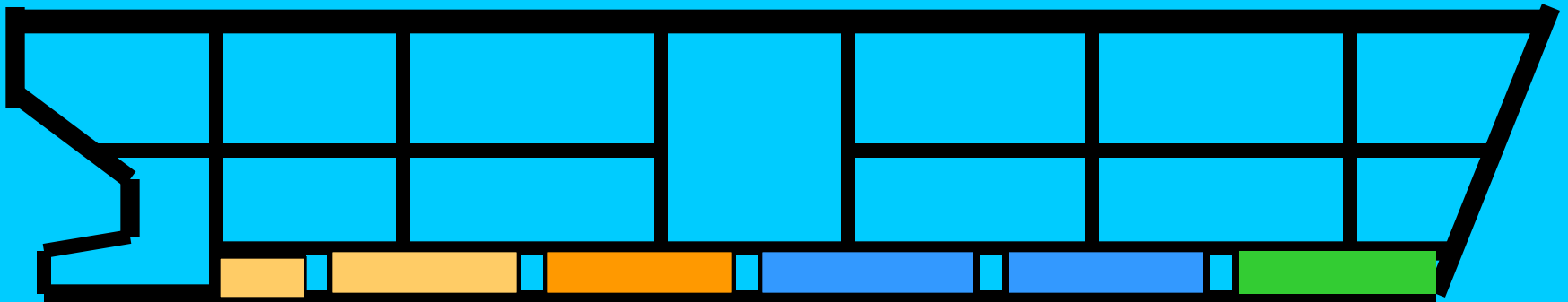


CHAIN LOCKER



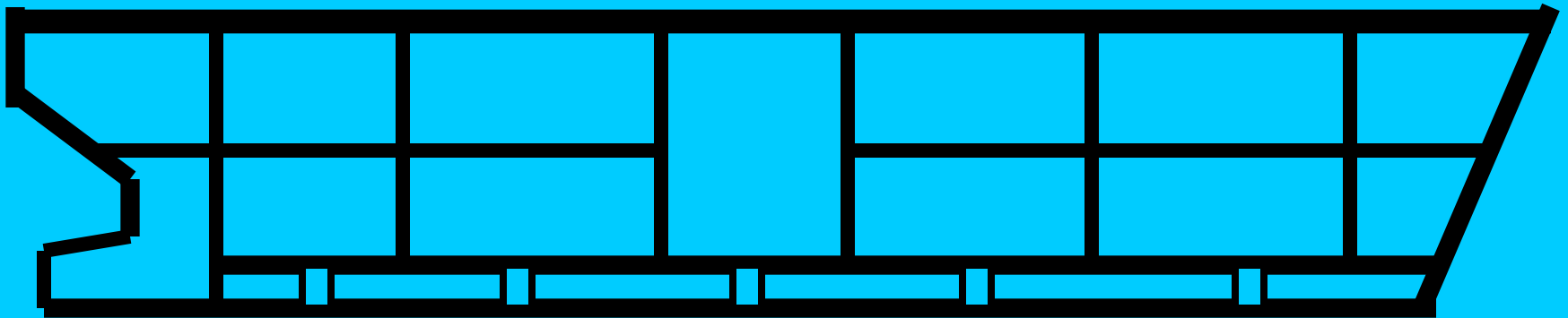
THE DOUBLE BOTTOM

The double bottom is for strength and provides *storage* for fuel, *lubricating* oil and waters.



COFFERDAMS

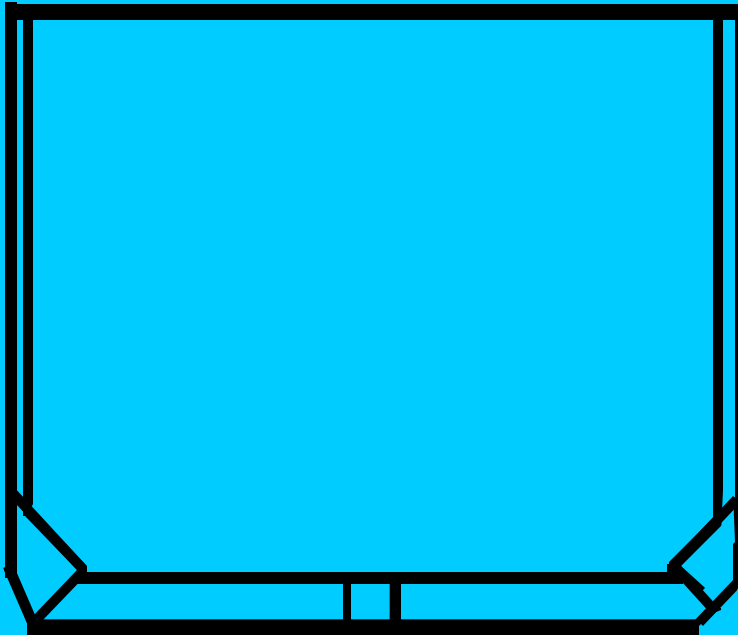
Cofferdams are *transverse* or *longitudinal* spaces between tanks that prevent leaking.



Transverse cofferdams.

CROSS SECTION

The *longitudinal* cofferdam runs fore to aft.



Longitudinal cofferdam.

The International Maritime Language Programme – IMLP

FINISHED

© P.C. van Kluijven



The IMLP is an IMO-standard.